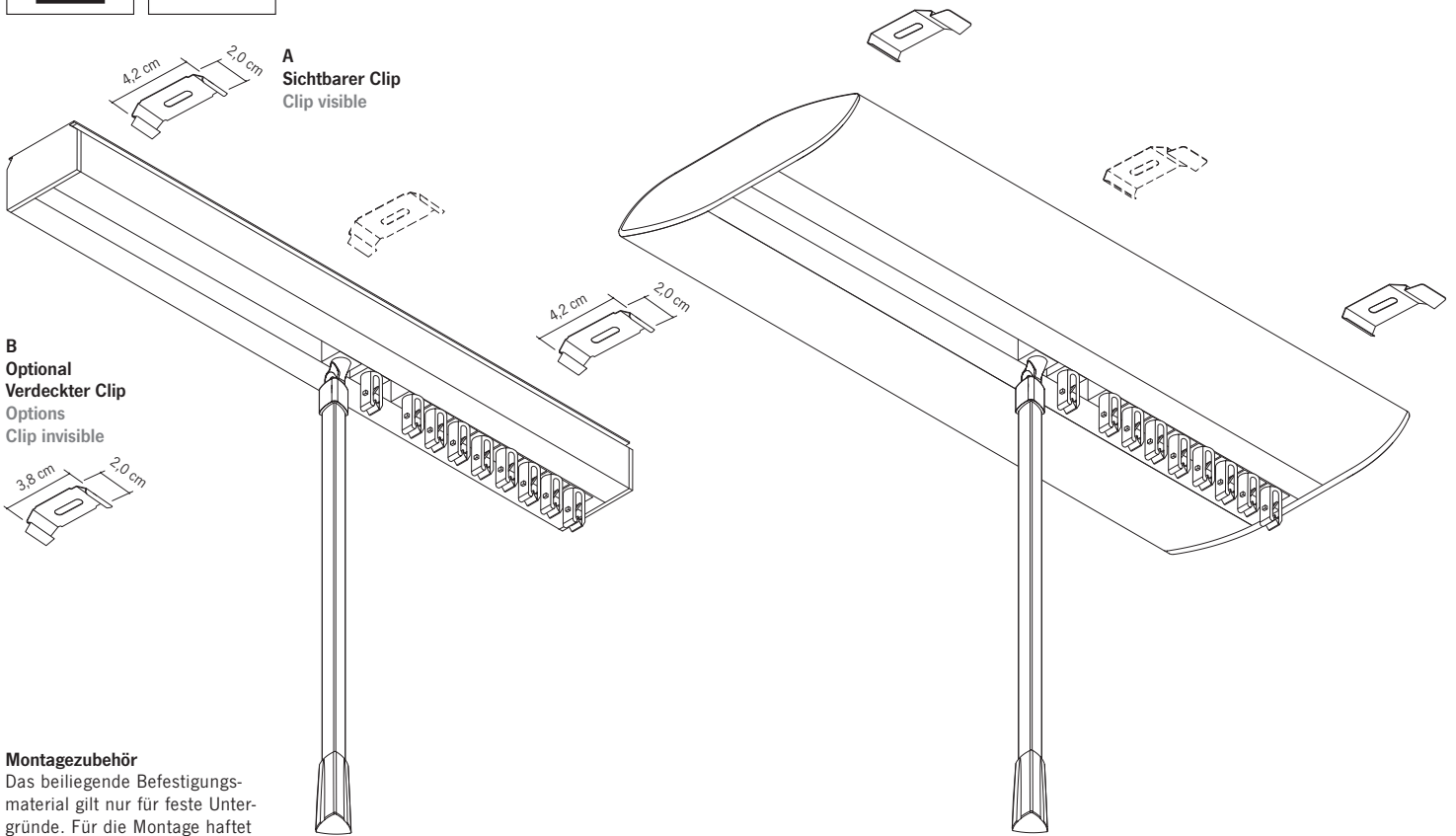


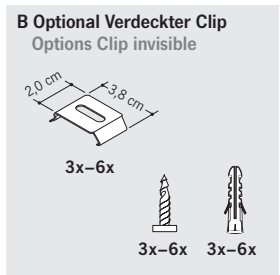
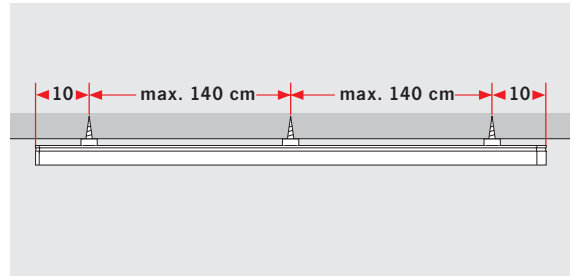
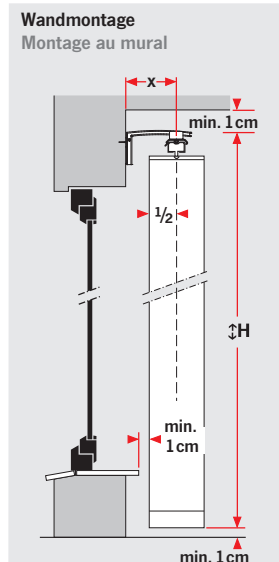
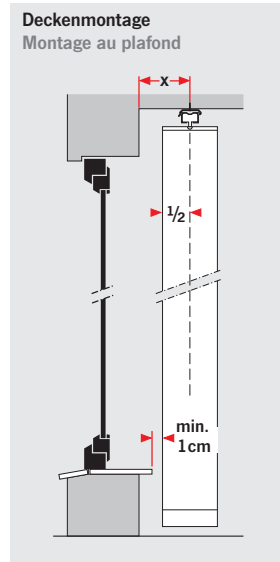
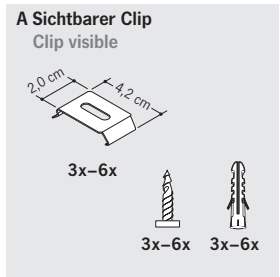
Lamellenvorhang L1 / DL1 Schleuderstab
Store à lamelles L1 / DL1 Lance-rideau



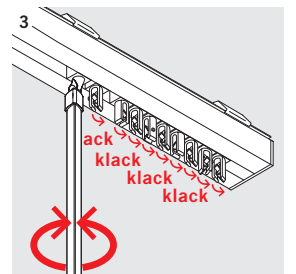
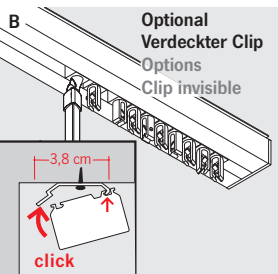
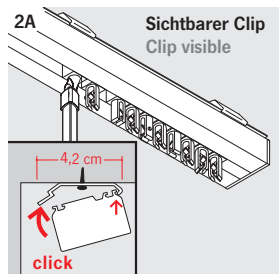
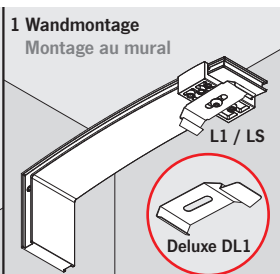
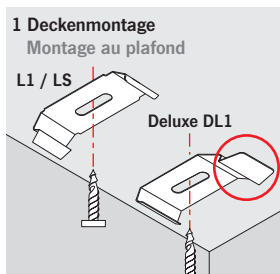
Montagezubehör
Das beiliegende Befestigungsmaterial gilt nur für feste Untergründe. Für die Montage haftet der Montierende.

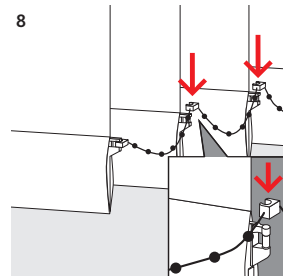
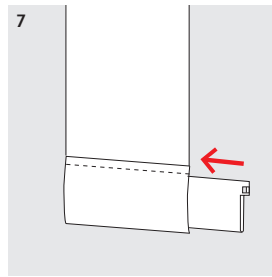
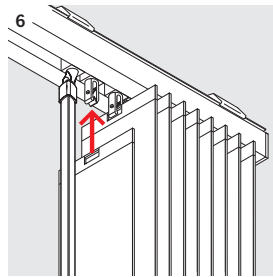
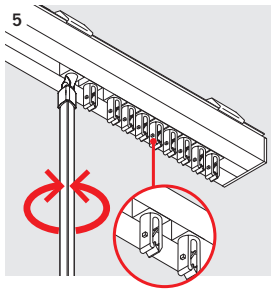
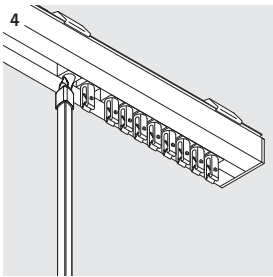
Accessoires de montage
Le matériel de fixation joint ne peut être appliqué que sur des bases solides. La personne chargée du montage est responsable du montage.

Montagepunkte bestimmen
Déterminer les points de montage

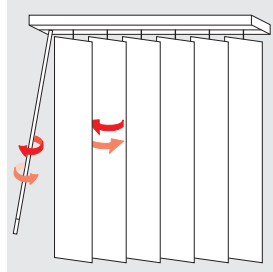
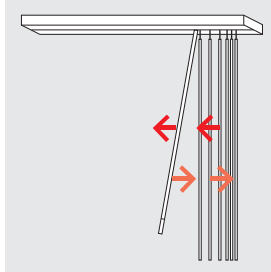


Montage
Montage

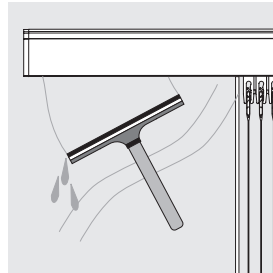
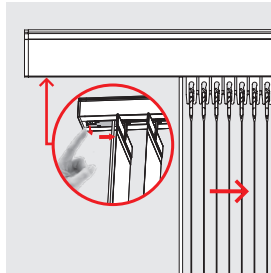




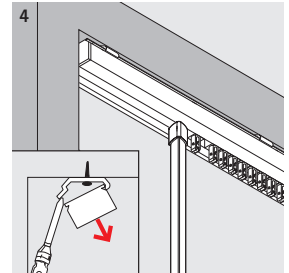
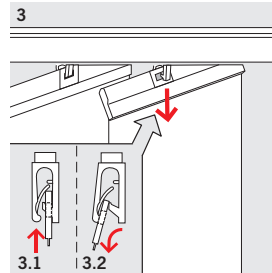
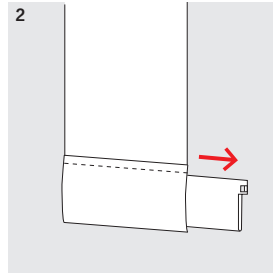
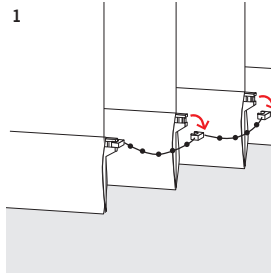
Bedienung:
Utilisation:



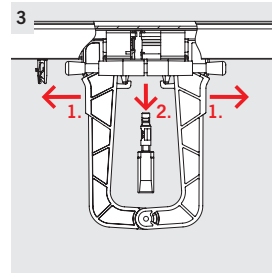
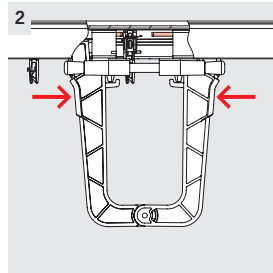
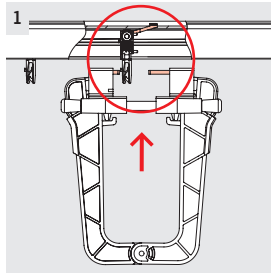
Paket verschieben
Déplacer le paquet



Demontage
Démontage



Auswechselbare Haken
(mit Spezialzange)
Achtung!
**Schnecke gegen herausfallen
mit Klebeband sichern.**
Crochets interchangeables
(avec pince spéciale)
Attention!
Bloquer la roue dentée avec
du ruban adhésif pour éviter
qu'elle ne tombe sur le sol.



Erkeranlagen Montage:
Installations à encorbellement
Montage:

